

MAXAM

Characteristics of MAXAM

MAXAM is a highly reactive inorganic agent in a silicate & alkaline metal base. It is a clear, film-less, non-yellowing, non-petroleum, penetrating solution for all concrete and masonry that transcends conventional concrete sealers and or water repellent. It is not merely a surface sealer or coating. It is, in fact, a complete sophisticated formulation of inorganic/reactive chemistry.

MAXAM is essentially a reactant that reacts with free alkali and alkaline hydrates that exist in concrete. These hydrates are effectively bound and converted into a neutral and insoluble compound structure.

The corrosive chemical by-products are neutralized, additional bonding strength is provided, and the concrete is hydrostatically sealed.

A single, economical and simple application of MAXAM is permanent and will produce concrete structures that are longer lasting, more durable, thermal resistant, corrosive resistant, and will maintain their original beauty much longer. It should also be noted that it will seal and prevent internal corrosion of steel reinforcing in concrete. It strengthens masonry and substantially resists efflorescence and spilling. This treatment also allows the surface to breathe and does not alter the color or texture of the masonry materials.

Basic Use

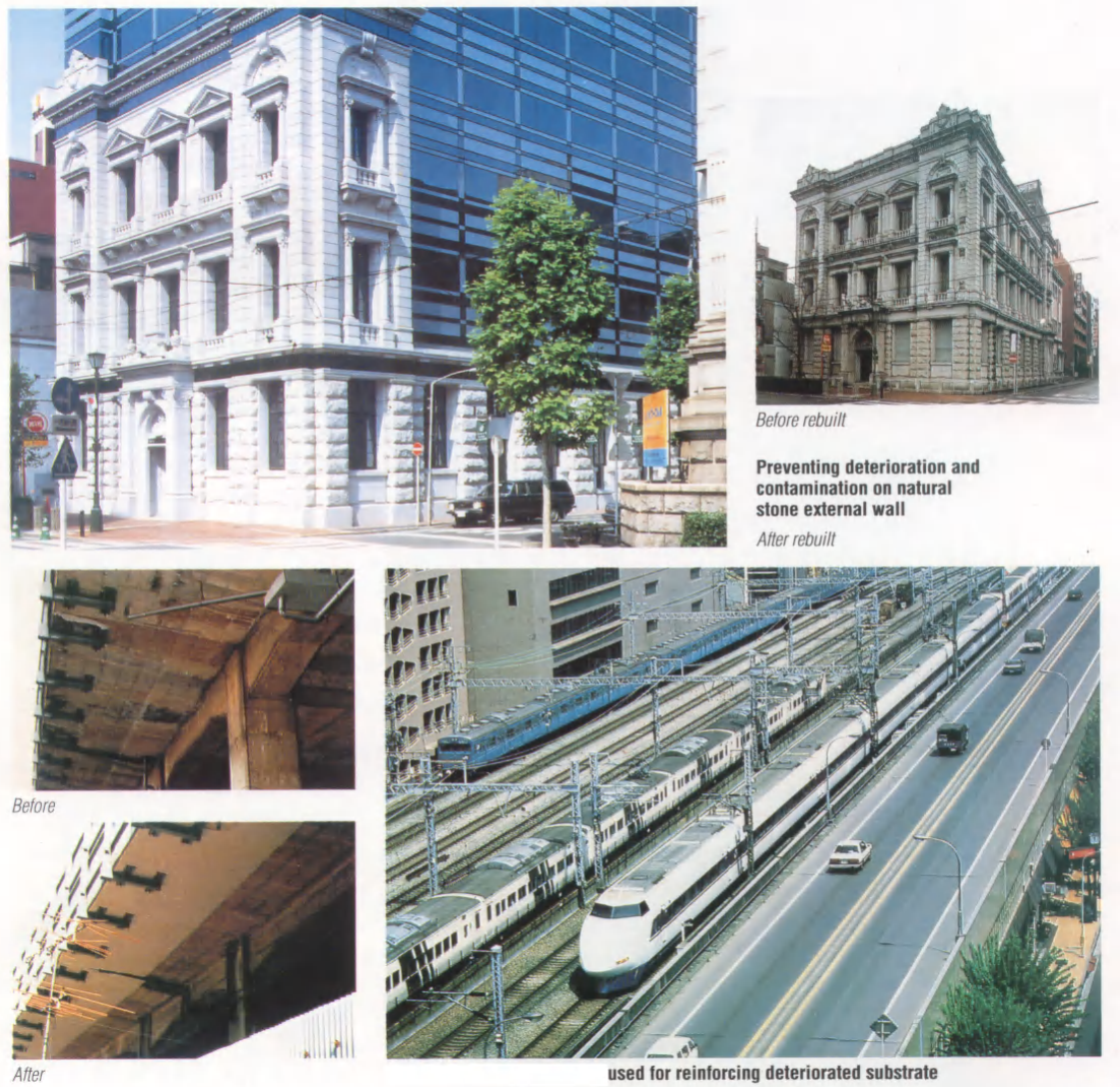
MAXAM can be applied to any cementations surface: concrete, block, stucco, terrazzo, brick, marble, granite and ceramic tiles etc. It can be used on top and underside or on grade as a slab hardener, dust-proofer, and/or water-sealing agent.

A single application of MAXAM is permanent and provides the benefits.

- Resists dampness & water absorption
- Hold hydrostatic pressure (Max 0.2kg/cm²)
- Retards pitting, dusting and rutting
- Reduces penetrating of grease, oil, and acids

- Resists fungi and mildew growth
- Increases thermal resistant of concrete
- Permanently densifies and hardens all concrete and masonry surface
- Increase resilient of concrete

MAXAM is an excellent primer for concrete and masonry surface. Its application extends the life of paint and aids in the prevention of paint peeling and cracking due to substrate moisture.



Composition

MAXAM is an inorganic water base product to which an active reactant has been added. The resulting solution deeply penetrates masonry material due to its very low surface tension and forms an insoluble crystallization within it.

Packing

Available in 20 liters plastic container.

Applicable Standards

MAXAM has been successfully tested under the followings:

ASTM C-67, Section 7 - water absorption

Section 9 - suction

Section 10 - efflorescence

ASTM C-666 - freeze-thaw resistance

ASTM G23-69

ASTM E42-65 - artificial weakening

This product has been approved by the USDA for use in food processing facilities, and approved by Food Analysis Center of Japan for use in drinking water concrete tank.